

Sensor City

Liverpool, England

Project Data Sheet

NOVUM



Specifications

Project: Sensor City
Application: Facade
Location: Liverpool, UK
Size: 6,950 ft² / 645 m²
Architect: IBI Group inc

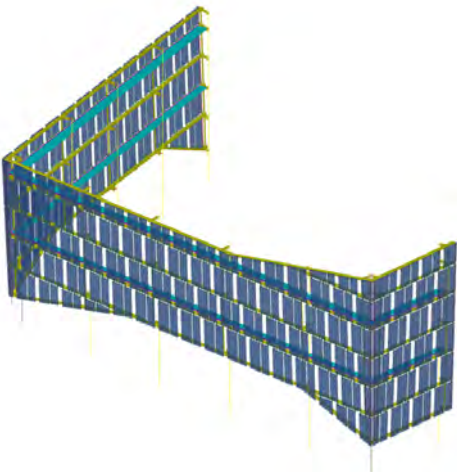
Novum Systems

Structural

AES: Novum's Architecturally Exposed Steelwork was connected to the building's primary steel frame and supported both the 645m² area of glass and maintenance access walkways located behind the glass veil. All steelwork was factory fabricated and delivered to Liverpool and mechanically fastened on-site without the requirement for site welding.

Glazing

PSG: Bespoke double layer screen printing on laminated, toughened, single glazed panels with Saflex DG41 structural PVB interlayer provided enhanced structural protection. To protect the building envelope from high wind loads and increase impact resistance, Novum applied its HG-01 impact tested point supported glass system. The façade design was created by artist Julian Stocks. It was felt that his 'Fields of Gold' design represented the flow of sensor data in digital and analogue formats. The enamel silk screen print uses a pallet of gold; reflective metallic enamels are paired with a transparent gold interlayer which supports the ivory and black enamels. The panels protect occupants from UV radiation and modify the interior light levels. Novum installed the 299 custom panels using stainless steel rotules and steel plated spiders.



Design Solution

Novum was contracted to design, supply, fabricate and install a stunning glass veil which wraps around three side elevations of Sensor City. The project utilises Novum's Architecturally Exposed Steel System and Point Supported Glass System adding an extremely high-end aesthetic to the building. The custom silk screen print is intended to replicate sensors with the idea being to promote and represent the cutting edge technologies and areas of study going on behind the veil, where they are pushing the boundaries of sensor innovation.

